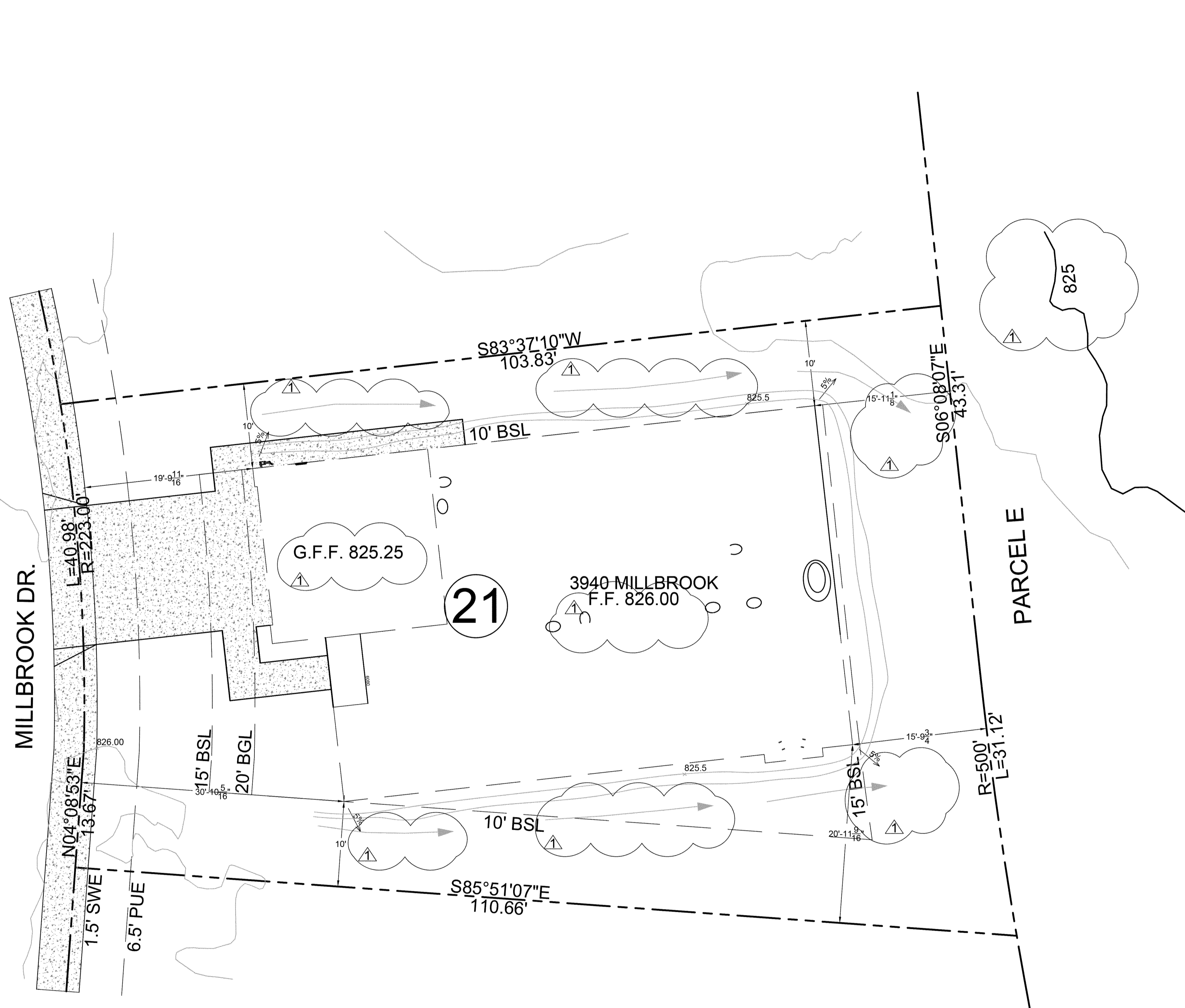


ABBREVIATIONS

A.U.E	ACCESS & UTILITY EASEMENTS	HC	HANDICAP
BSW	BACK OF SIDEWALK	MH	MANHOLE
CO	CLEANOUT	P.U.E	PUBLIC UTILITY EASEMENT
DI	DRAINAGE INLET	SD	STORM DRAIN
DW	DRIVEWAY	SS	SANITARY SEWER
EX	EXISTING	SSCO	SANITARY SEWER CLEANOUT
FL	FLOWLINE	WS	WATER SERVICE



**LEGEND**

- PROPERTY LINE
- ADJACENT PROPERTY LINE
- MINIMUM SET BACK LINES
- EASEMENT
- CENTERLINE

Plan check notes:

Surface drainage shall be diverted to a storm sewer conveyance or other approved point of collection that does not create a hazard. Lots shall be graded to drain surface water away from foundation walls. The grade shall fall a minimum of 6 inches (152 mm) within the first 10 feet [§ R401.3 CRC]

**SITE PLAN**

SCALE: 1/8" = 1'-0"

**SRA PROJECT**

This proposed project is located within a designated Wildland Urban Interface. New buildings located within any Fire Hazard Severity Zone or any Wildland-Urban Interface Fire Area designated by the local jurisdiction or in a State Responsibility Area (SRA) shall comply with the requirements of CRC Sec. R337.1 for exterior wildfire exposure. Certain detached accessory buildings are exempt. [§R337.1.3 CRC]